

**We Focus on the  
Details, so You  
can Focus on  
the Case <sup>TM</sup>**



## Project Management

- Review and categorize trial expenses
- Oversee and qualify outside vendors
- Reservations
- Manage room blocks
- Errands
- Courthouse, courier, etc.
- Catering and groceries
- Site inventory management
- Transportation

## Trial Presentation

- Assess technology needs
- Create clip reports of deposition edits
- Database creation
- Database management and backup
- Electronically label exhibits
- Edit video depositions
- Impeachment clip creation and playback
- Manage courtroom technology
- Preparation with experts and attorneys
- Present visuals, documents and video in court
- Presentation consulting
- Setup and strike of courtroom equipment
- War room tech support



## IT

- Court – daily shuttle of team and materials
- Courtroom technology
- Database management
- Equipment deployment
- Network creation
- Network support
- Server management
- Technology liaison between firms
- Telephone support
- Transportation –airport, hotel, courthouse
- User support

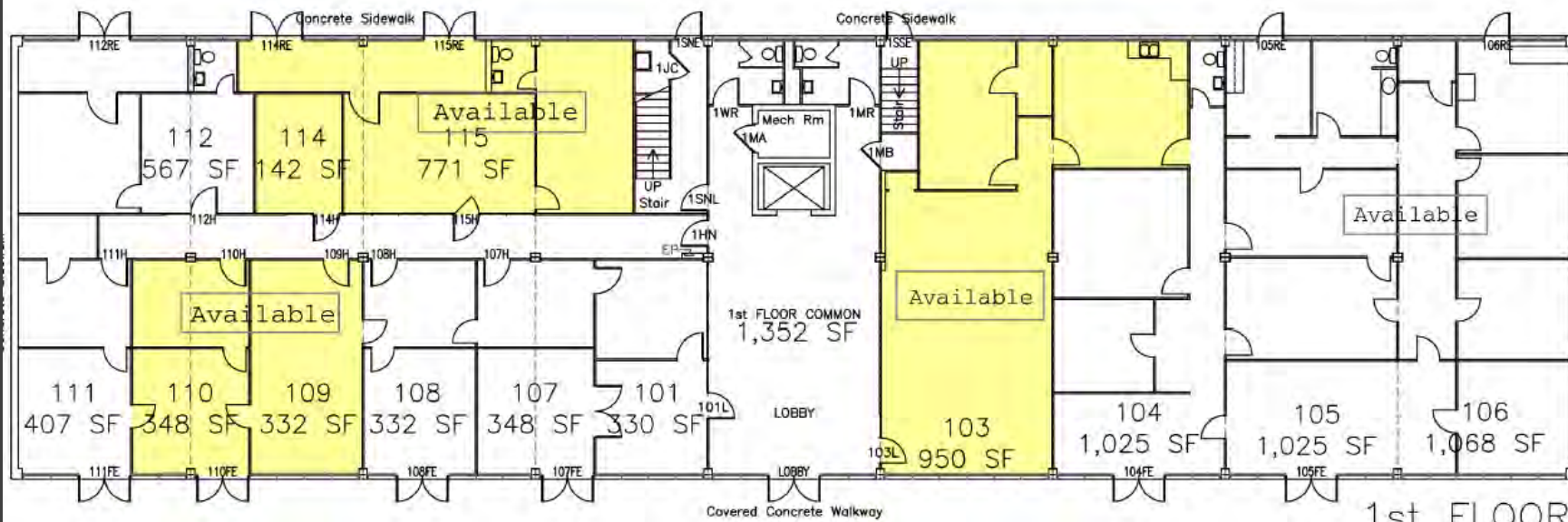
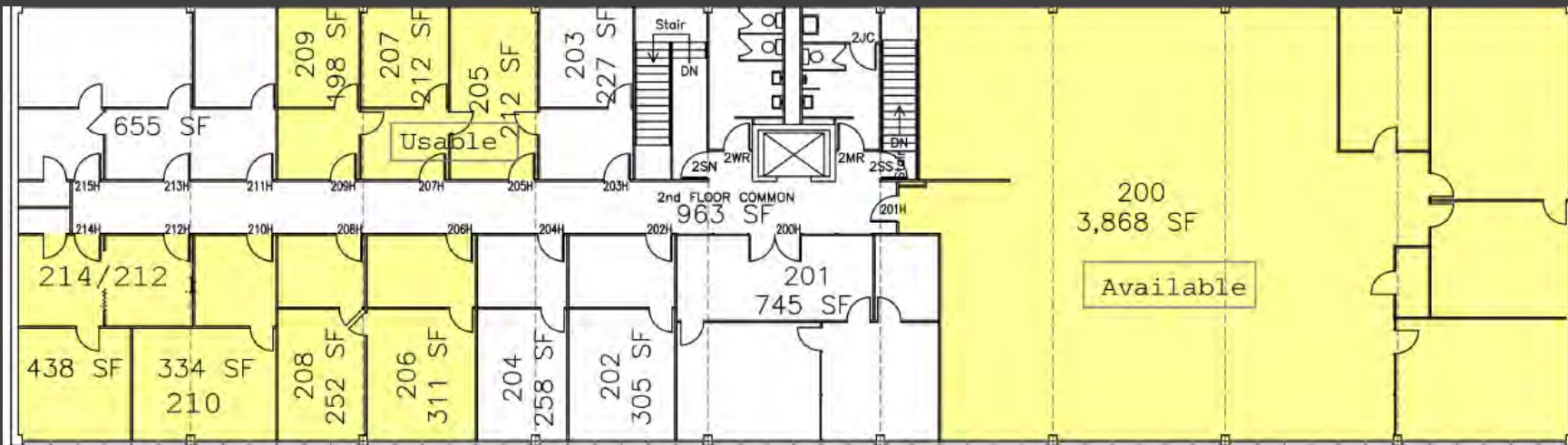
## Graphic Design

- Charts, graphs, callouts and timelines
- Collaboration with team
- Demonstratives
- Opening and closing presentations
- Slides
- Trial boards

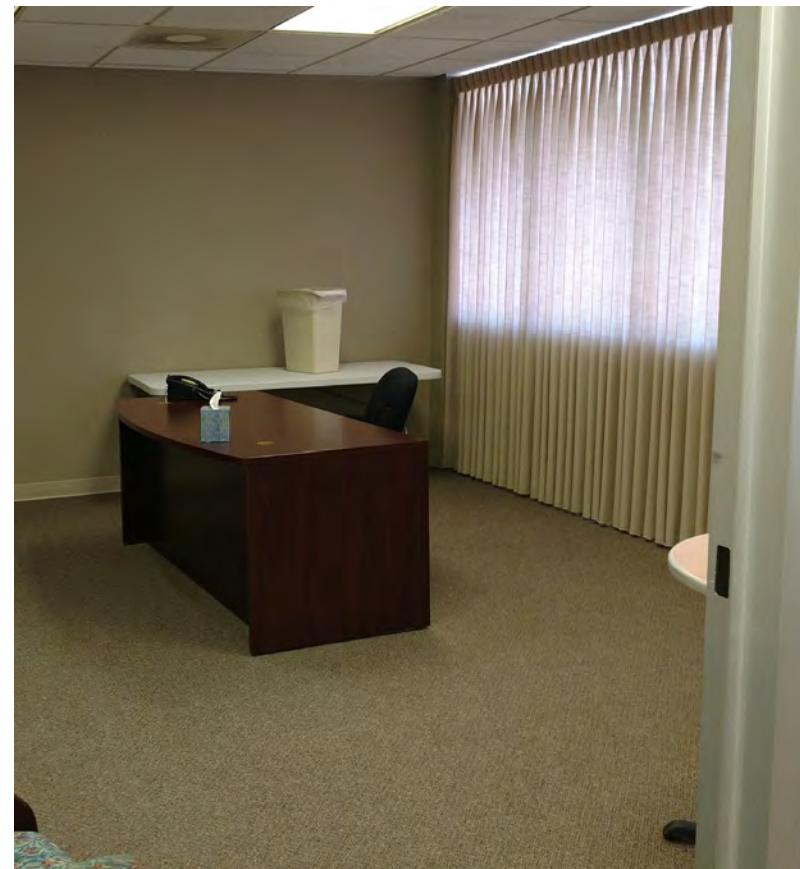
# Marshall War Room Spaces







# 505 E Travis Office Space



# 505 East Travis, Suite 200

---

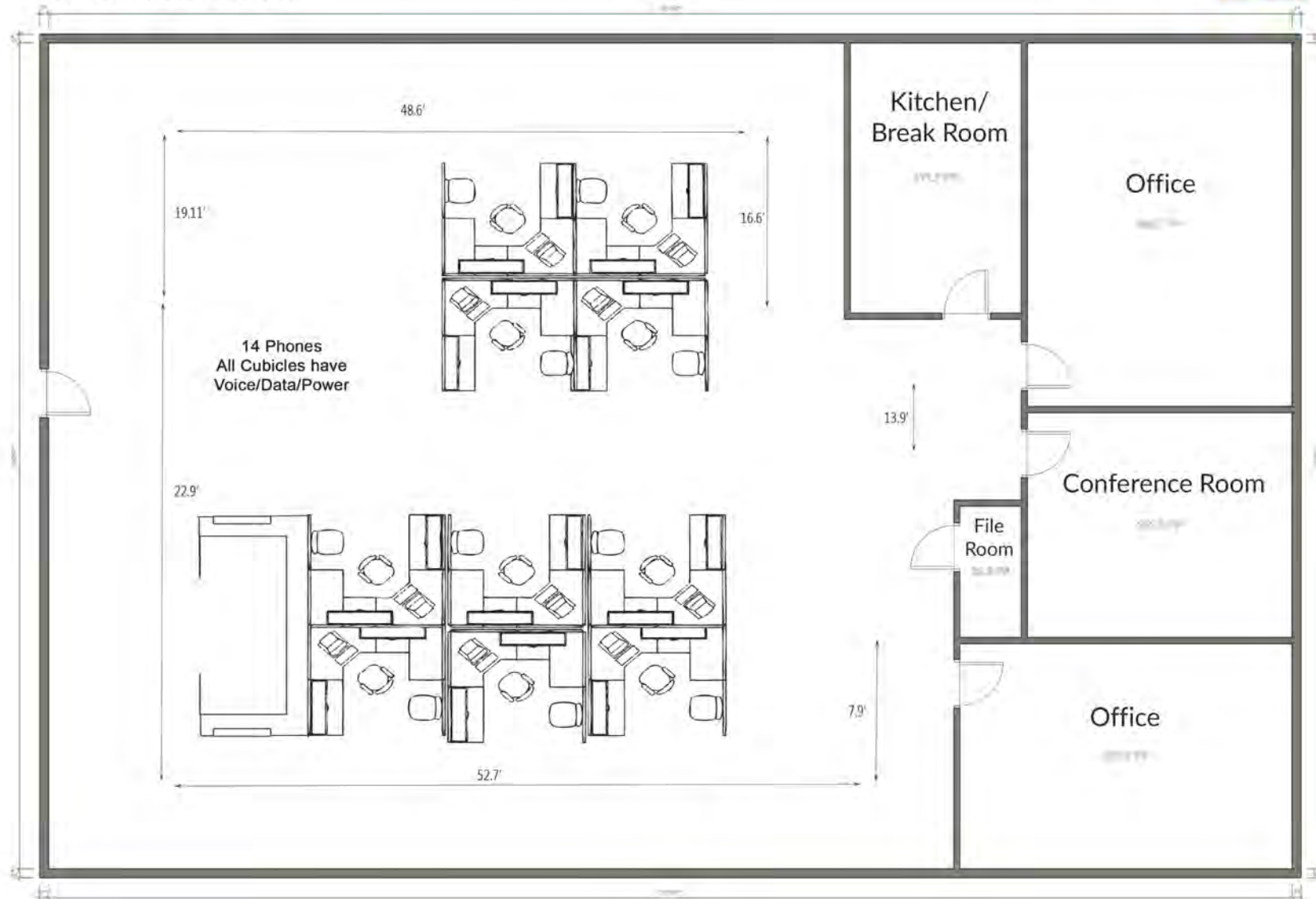
.5 Miles from Sam B. Hall US Court House



# Marshall Office Space Floor Plan

## Suite 200 (Upstairs) - 5,000 sq ft.

505 E. Travis  
Marshall, TX 75670





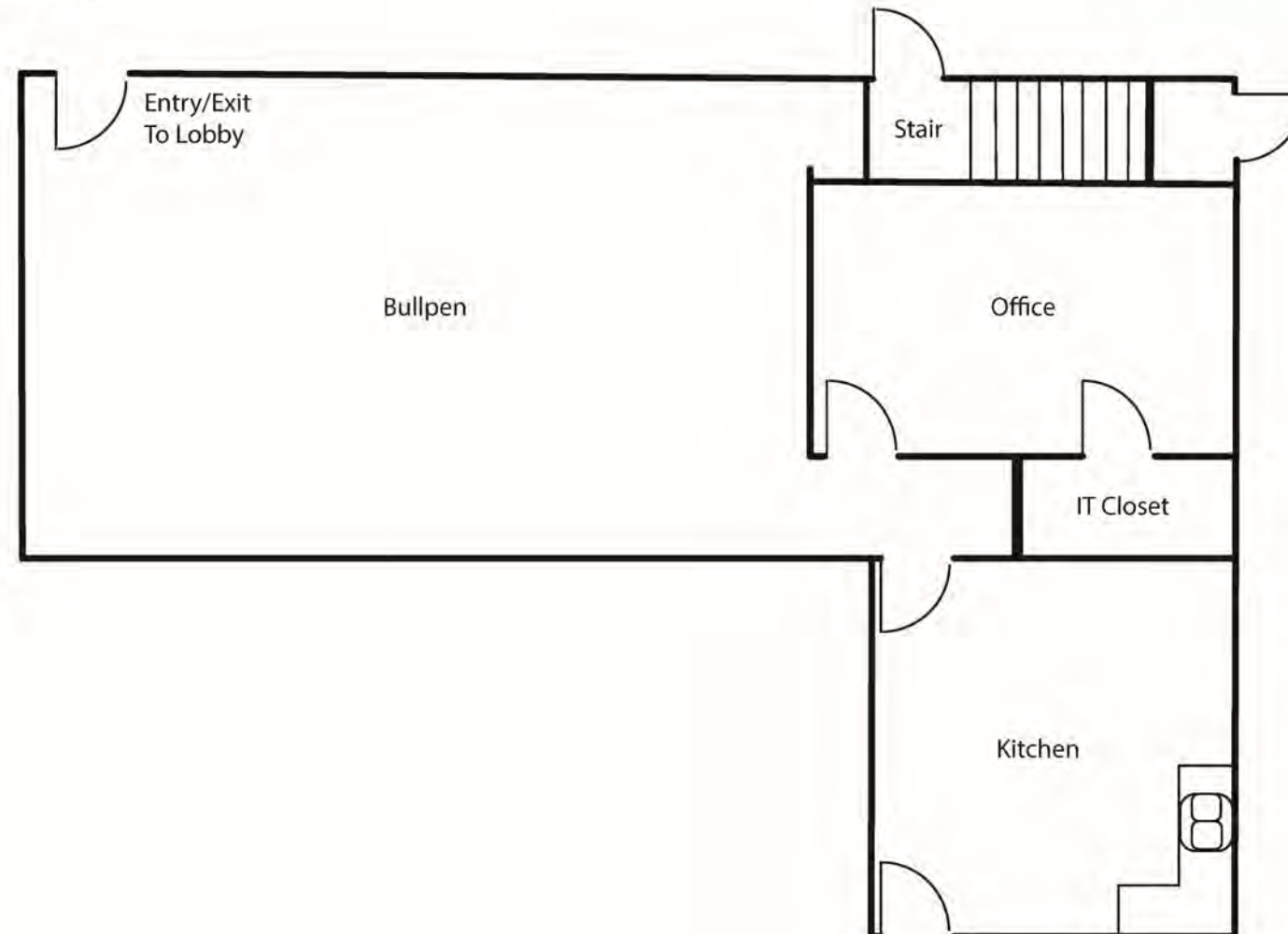
# 505 East Travis, 103

.5 Miles from Sam B. Hall US Court House

# Marshall Office Space Floor Plan

## Suite 103 (Lower Level) - 1,500 sq ft

505 E. Travis  
Marshall, Texas 75670







# Mahon Building

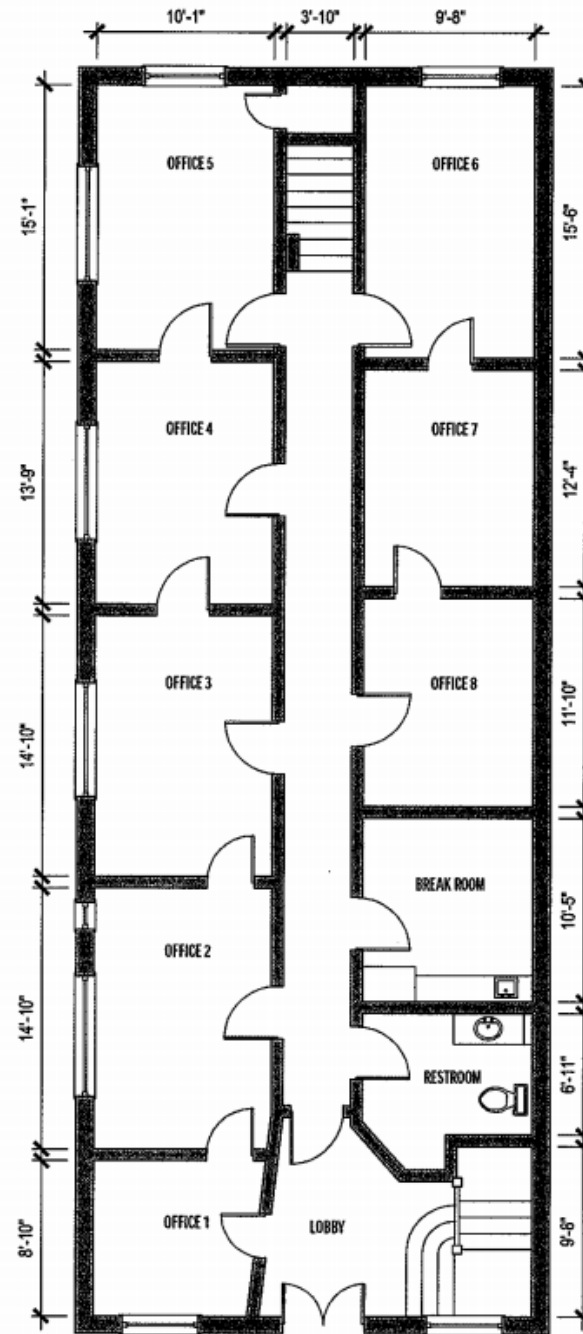
.1 Miles from Sam B. Hall US Court House

# The Mahon Building

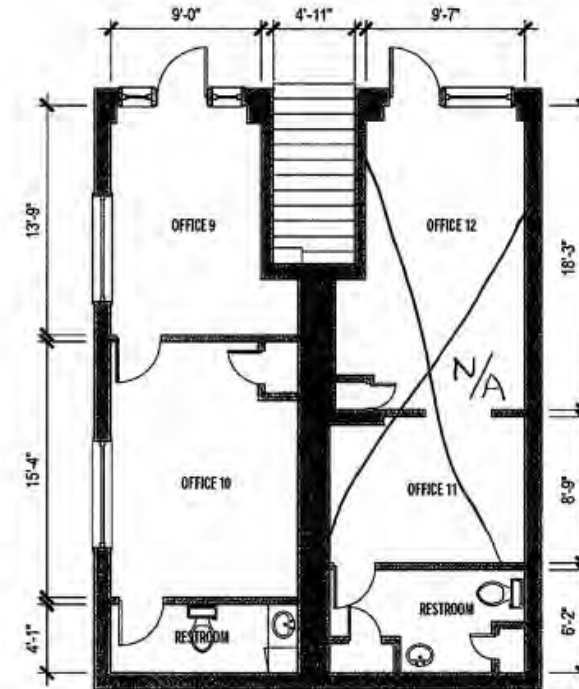
2000 Square Feet

E Houston St.

Marshall, TX 75670

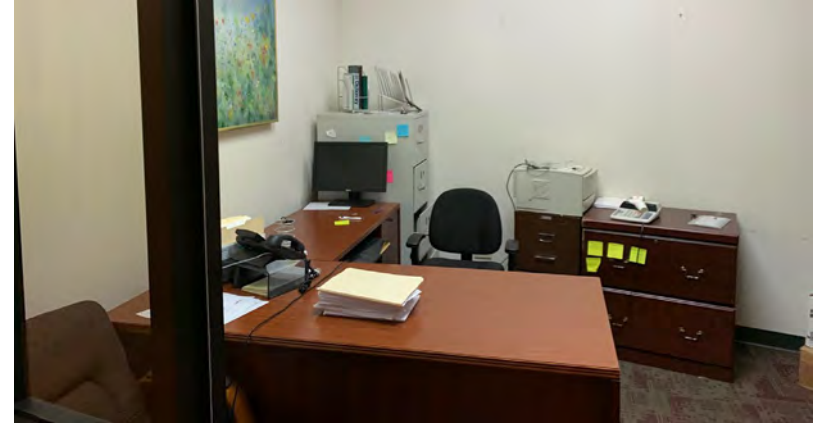


HOUSTON STREET



This  
Area  
is Not  
Available



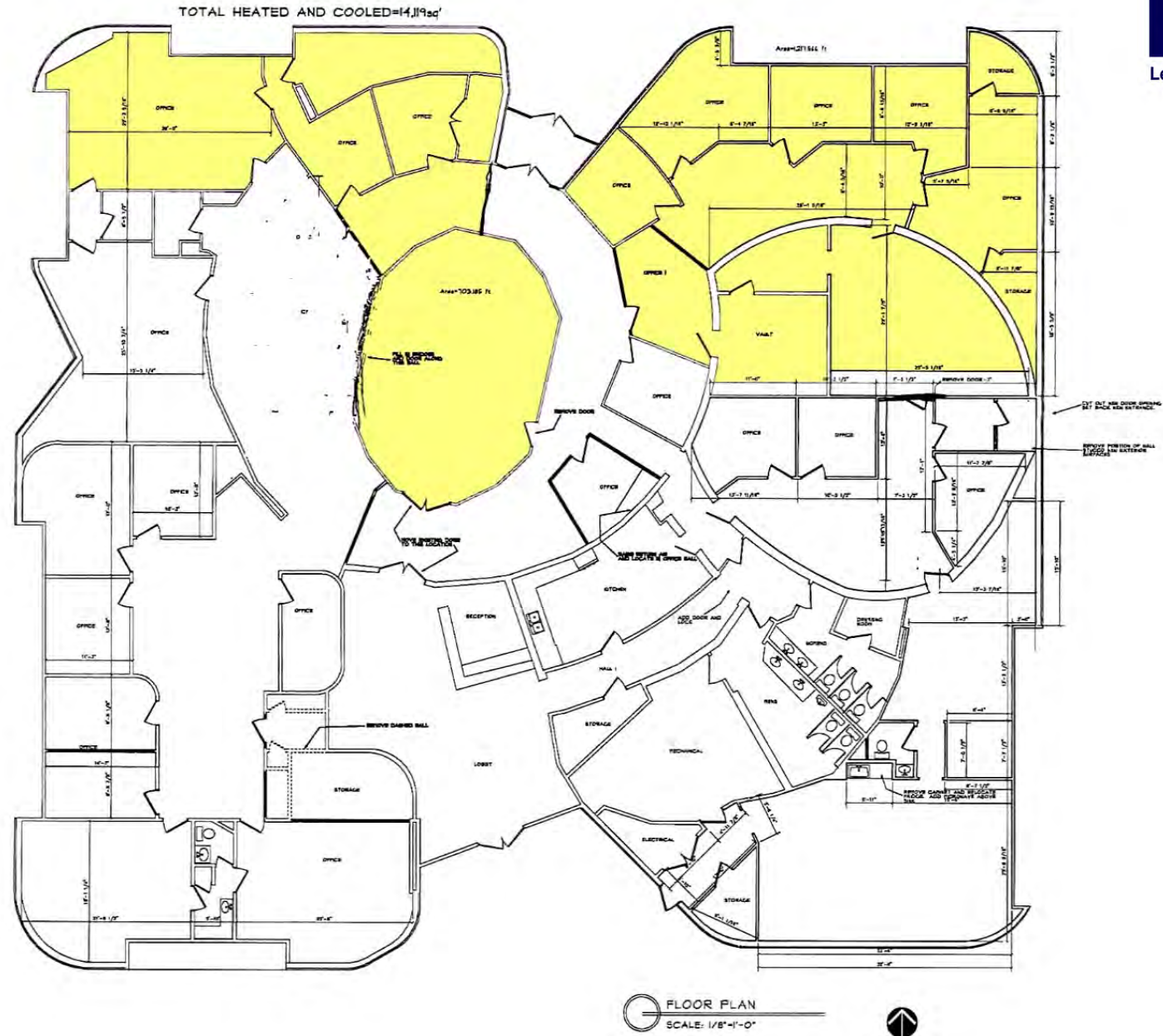


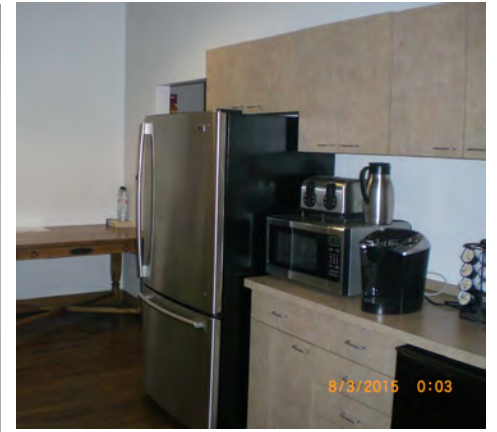
# Carlile Building

.4 Miles from Sam B. Hall US Court House



Marshall, Texas 75670





# Baxter Building

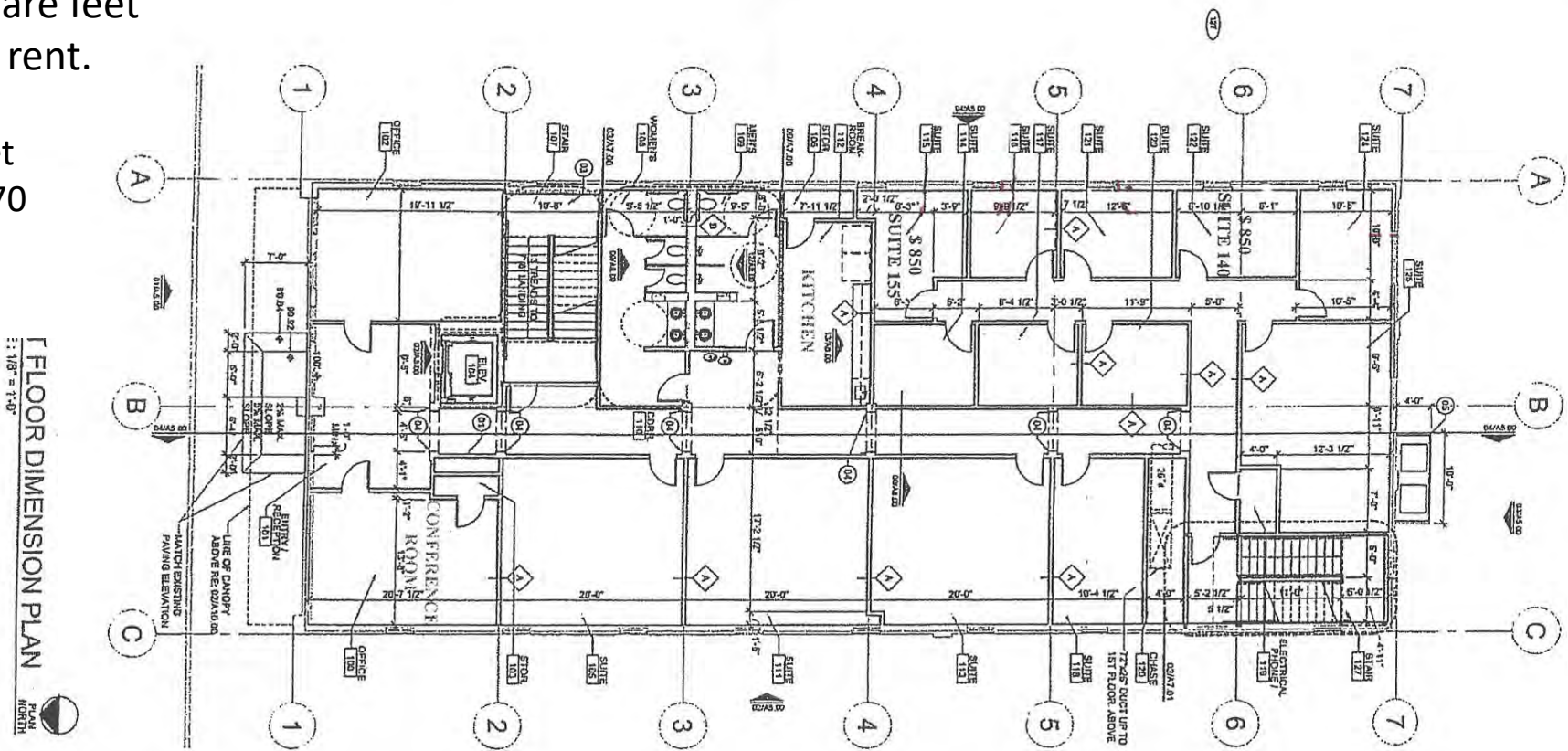
50 ft. from Sam B. Hall US Court House



# The Baxter Building

1st floor 6000 square feet  
2200 available for rent.

104 E Houston Street  
Marshall, Texas 75670



1st FLOOR DIMENSION PLAN  
Scale: 1/8" = 1'-0"  
PLAN NORTH

**REVISIONS:**

No	Date	Description
01	02/01/05	PRE-DESIGN
02	10/21/05	SD
03	11/16/05	SD
04	12/06/05	DD
05	12/14/05	DD
06	01/17/06	DD
07	01/24/06	Construction Docs.
08	04/11/06	Steel Stud Dwg.
09	06/07/06	Connector Dwg.
10	06/29/06	Reinforcing One
11	07/25/06	Reinforcing Two

**SEAL:**



**JOB #:** 11030  
**CLIENT:**

**104 E HOUSTON STREET**  
Office Building

104 E. Houston Street  
Marshall, TX 75670

**SHEET CONTENTS:**

**DIMENSION PLANS**

**A2.11**

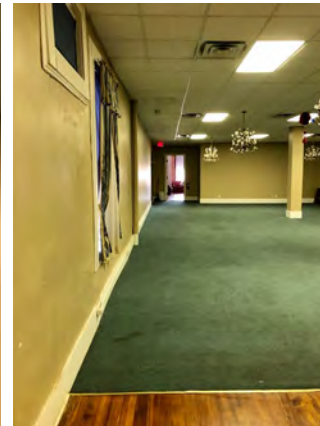
**DATE:** June 29, 2006  
**SHEET:**

**AZIMUTH**  
architecture

3809 Perry Avenue  
Suite 205  
Dallas, Texas 75226  
214.261.9060  
214.261.9048 Fax

www.azimuthinc.com





# Private Banquet Space

50 ft. from Sam B. Hall US Court House